

Beltseal

Hydroexpansive gasket for PVC conduit pipes in concrete masonry



Beltseal is a gasket “belt” produced with a special hydro-expansive rubber that reacts upon coming into contact with water that increases its initial volume. Thanks to its geometry, Beltseal is very quickly applied directly to PVC piping without additional processing. It hermetically seals any discontinuities that could easily be found in the concrete due to the presence of PVC conduit pipes. In many cases, such discontinuities could pass from one side of the masonry to the other and thus seriously compromise the waterproofing of the masonry itself. There are three sizes available which are respectively suitable for diameter pipes: 70/90 mm, 110/125 mm and 160/200 mm.

CUSTOMS CODE: 4006 9000

COMPONENTS: Single-component

APPEARANCE: Gasket

AVAILABLE COLORS: Blue

PACKAGING AND DIMENSIONS: Beltseal 70/90: 1 x (Box 180 unit) - Beltseal 110/125: 1 x (Box 180 unit) - Beltseal 160/200: 1 x (Box 180 unit)

FEATURES AND BENEFITS

The hydroexpansive capacity of Beltseal has been laboratory tested with two different types of water: demineralised and with a highly basic pH (to simulate conditions in contact with concrete). Expansion tests showed a respective change in volume of 300% and 250%.

FIELDS OF APPLICATION

For underground concrete constructions with conduit pipes, where the wall is in direct contact with the ground and where there are no layers of waterproofing outside the masonry itself: basements, cellars, underground garages, below-ground and cellar environments, etcetera.

ALLOWED SUPPORTS

Concrete - Prefabricated concrete - Plastic - Steel

MODE OF USE

Position the Beltseal hydrofoam gasket centrally in respect of the length of the pipe (using one gasket per pipe).

APPLICATION METHODS

Apply by hand



KEY FEATURES

⊕ Hydroexpansive product: 250 - 300 %

🕒 Shelf-life: 24 months

🌡️ Temperature of use: -20 / +75 °C

TECHNICAL SPECIFICATIONS

Shore A
Hardness **35**

Density **1.22 +/- 0.03 g/cm³**

Alkali-resistant material

Breaking load longitudinal **>1.5 MPa**

Longitudinal elongation at break **>350 %**

Resistance to water pressure **5 bar**

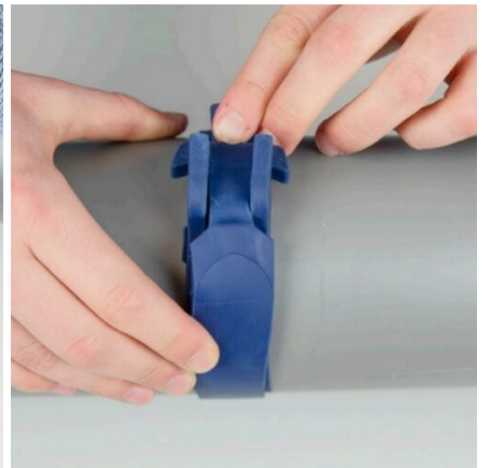
CONSUMPTION

No. 1 Beltseal gasket for each conduit pipe to be sealed.

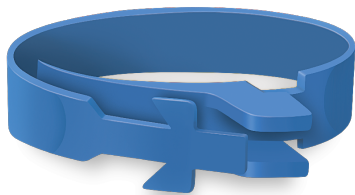
STORAGE AND CONSERVATION

Store the product in its original packing, in a fresh and dry environment, avoiding frost and direct sunlight. Inadequate storage of the product may result in a loss of rheological performance. Protect from humidity.

PHOTO GALLERY



ADDITIONAL CONTENT



WARNINGS AND PRECAUTIONS

The general information, along with any instructions and recommendations for use of this product, including in this data sheet and eventually provided verbally or in writing, correspond to the present state of our scientific and practical knowledge. Any technical and performance data reported is the result of laboratory tests conducted in a controlled environment and thus may be subject to modification in relation to the actual conditions of implementation.

Azichem Srl does not assume any liability arising from inadequate characteristics related to improper use of the product or connected to defects arising from factors or elements unrelated to the quality of the product, including improper storage. Those wishing to utilise the product are required to determine prior to use whether or not the same is suitable for the intended use, assuming all consequent responsibility.

The technical and characteristic details contained in this data sheet shall be updated periodically. For consultation in real time, please visit the website: www.azichem.com. The date of revision is indicated in the space to the side. The current edition cancels out and replaces any previous version.

Please note that the user is required to read the latest Safety Data Sheet for this product, containing chemical-physical and toxicological data, risk phrases and other information regarding the safe transport, use and disposal of the product and its packaging. For consultation, please visit: www.azichem.com.

It is forbidden to dispose of the product and/or packaging in the environment.

