

Consilex Muffa Cleaner

Cleaning, descaling, with antimildew agent



Transparent, ready-to-use cleaning agent, for the safe removal of scale blackish incrustations from moulds and biodeteriogenic manifestations, as well as for the revitalising renewal of wooden surfaces.

CUSTOMS CODE: 3402 9010

COMPONENTS: Single-component

APPEARANCE: Liquid

AVAILABLE COLORS: Transparent

PACKAGING AND DIMENSIONS: Bottle 1 l - Plastic can 5 l - Plastic can 25 l

FEATURES AND BENEFITS

It is particularly recommended for the cleaning and removal of the brown and blackish incrustations caused by humidity and mould, on masonry, internal and external plasters, chalk coatings, lime, cement, paint, plastic, wooden surfaces. It can be used effectively also for the restoration and renewal of wooden surfaces degraded and blackened by humidity and the weather.

FIELDS OF APPLICATION

Cleaning and removal of deposits and stains caused by moulds and biodeteriogenic manifestations. Renovation and maintenance of wooden surfaces degraded by moulds and moisture.

ALLOWED SUPPORTS

Plasters - Concrete - Cement-based or lime-based mortars - Drywall - Plaster (gypsum) - Wood - Bricks - Tuff - Mixed walls (bricks and stones) - Brickworks - Stone walls

MODE OF USE

AS A CLEANING, DAMP PROOFING AGENT: Apply the product by spraying or brushing the surfaces to be cleaned, leave to work for a period of time ranging from 30 minutes to one hour; then remove the product with a sponge and rinse with water. In the case of particularly resistant concretions, repeat the operations described until their complete elimination. **AS WOOD RENEWER:** For surface cleaning, for example, before repainting, apply the product until rejection on soiled and/or blackened parts, with a sprayer or a brush. Remove the product after a few minutes with a damp sponge or brush with water. For a deeper treatment, to renew the original natural appearance of wood, leave the product to work for at least 12 hours. Then proceed with the removal of fouling with a brush and water and, after drying, proceed with the protective repainting with appropriate flatting or with transparent paints.




APPLICATION METHODS

Low pressure airless nebulizer - Brush - Sprayer


TOOL CLEANING


Water

KEY FEATURES

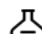
 Material 100% eco-friendly


 Shelf-life: 12 months

 Use wearing protective glasses

 UV-resistant

 Nonflammable

 Solvent-free

 Use wearing protective gloves

TECHNICAL SPECIFICATIONS

pH 11 - 12

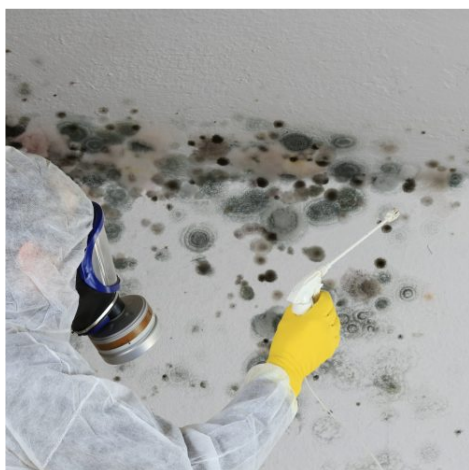
CONSUMPTION

Approximately 0,20 litres of Consilex Muffa Cleaner for every square metre of surface to be treated.

STORAGE AND CONSERVATION

Protect from freezing. Store the product in its original packing, in a fresh and dry environment, avoiding frost and direct sunlight. Inadequate storage of the product may result in a loss of rheological performance. Store the product at a temperature between +5°C and +35°C.

PHOTO GALLERY



Produced and distributed by **AZICHEM srl**
Via Giovanni Gentile, 16/A - 46044 Goito (MN), Italy
Tel: +39 0376.604185 / 604365
Fax: +39 0376 604398
www.azichem.com - info@azichem.com

Update of **08-02-2022**
Terms of sale and legal notices available at
<https://www.azichem.com/general-sales-conditions>
Total pages of this document: 3

ADDITIONAL CONTENT



WARNINGS AND PRECAUTIONS

The general information, along with any instructions and recommendations for use of this product, including in this data sheet and eventually provided verbally or in writing, correspond to the present state of our scientific and practical knowledge. Any technical and performance data reported is the result of laboratory tests conducted in a controlled environment and thus may be subject to modification in relation to the actual conditions of implementation.

Azichem Srl does not assume any liability arising from inadequate characteristics related to improper use of the product or connected to defects arising from factors or elements unrelated to the quality of the product, including improper storage. Those wishing to utilise the product are required to determine prior to use whether or not the same is suitable for the intended use, assuming all consequent responsibility.

The technical and characteristic details contained in this data sheet shall be updated periodically. For consultation in real time, please visit the website: www.azichem.com. The date of revision is indicated in the space to the side. The current edition cancels out and replaces any previous version.

Please note that the user is required to read the latest Safety Data Sheet for this product, containing chemical-physical and toxicological data, risk phrases and other information regarding the safe transport, use and disposal of the product and its packaging. For consultation, please visit: www.azichem.com.

It is forbidden to dispose of the product and/or packaging in the environment.

