

Consilex San

Re-alkalising, reinforcing, protective, hardener for concrete



Reactive, colourless mineral solution for preliminarily re-alkalising and reinforcing concrete surfaces to be restored. It is an inorganic, mineral compound chemical affine with concretes. It reacts with alkali hydrates alkaline and with water, present in the porosity of concretes, mortars and plasters, forming stable silicate gels, which hermetically and lastingly seal the capillary lattice.

CUSTOMS CODE: 3824 9970

COMPONENTS: Single-component

APPEARANCE: Liquid

AVAILABLE COLORS: Transparent

PACKAGING AND DIMENSIONS: Plastic can 5 kg - Plastic can 10 kg - Plastic can 25 kg - Pallet tank (IBCs) 1000 kg

FEATURES AND BENEFITS

Consilex San waterproofs and reinforces the conglomerate both at superficial level and in more internal layers, preventing the penetration of water, harsh solutions etc., it protects the structures from the consequences of freeze-thaw cycles, from harsh processes resulting from the use of antifrost de-icing salts in road works, further facilitating the removal of ice incrustations.

FIELDS OF APPLICATION

Through re-alkalisation, hardening, consolidation, conservative maintenance of plasters to base lime and cement, concrete, paving, reservoirs, pipes, tanks, vessels, bridges, viaducts, tunnels, retaining walls, parking areas, airport runways and motorway.

ALLOWED SUPPORTS

Plasters - Concrete - Prefabricated concrete - Fiber-cement

PREPARATION OF SUPPORTS

Accurate dedusting and saturation with water, for achieving the condition "dry surface saturation". Saturation is particularly important: the product reacts with substances placed in water solution and uses the same water for forming the gel.

MODE OF USE

Spray-apply with a low pressure airless pump on cement surfaces to be treated. For deep reinforcement, apply several coats taking care to apply each coat when the previous begins to dry out. It can dull aluminium and glass surfaces, ceramised tiles, etc., which must then be protected by taping or other, during application. Do not apply on mineral surfaces (like plaster and bricks) destined to be visible, without carrying out a preliminary test, as you latent salts may crystallise!




APPLICATION METHODS


Sprayer - Low pressure airless nebulizer


TOOL CLEANING

Water


KEY FEATURES

 Density: 1.02 kg/dm³

 Shelf-life: 12 months

 Temperature of use: +5 / +35 °C

 Nonflammable

 Solvent-free

TECHNICAL SPECIFICATIONS

Depth of penetration **2-6 mm**

pH **12**

Active substance > **25 %**

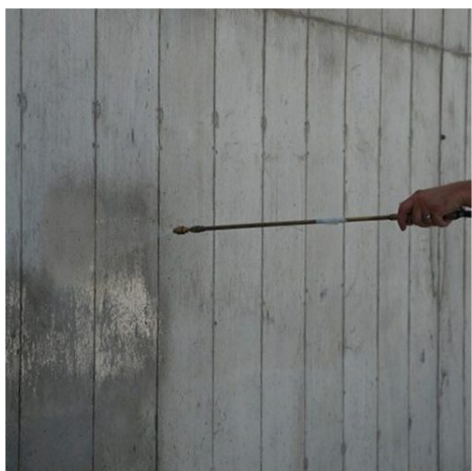
CONSUMPTION

Apply from 0.15 to 0.30 kg of Consilex San per square metre of surface to be treated.

STORAGE AND CONSERVATION

Protect from freezing. Store the product in its original packing, in a fresh and dry environment, avoiding frost and direct sunlight. Protect from humidity.

PHOTO GALLERY



Produced and distributed by **AZICHEM srl**
Via Giovanni Gentile, 16/A - 46044 Goito (MN), Italy
Tel: +39 0376.604185 / 604365
Fax: +39 0376 604398
www.azichem.com - info@azichem.com

Update of **10-01-2022**
Terms of sale and legal notices available at
<https://www.azichem.com/general-sales-conditions>
Total pages of this document: 3

ADDITIONAL CONTENT



WARNINGS AND PRECAUTIONS

The general information, along with any instructions and recommendations for use of this product, including in this data sheet and eventually provided verbally or in writing, correspond to the present state of our scientific and practical knowledge. Any technical and performance data reported is the result of laboratory tests conducted in a controlled environment and thus may be subject to modification in relation to the actual conditions of implementation.

Azichem Srl does not assume any liability arising from inadequate characteristics related to improper use of the product or connected to defects arising from factors or elements unrelated to the quality of the product, including improper storage. Those wishing to utilise the product are required to determine prior to use whether or not the same is suitable for the intended use, assuming all consequent responsibility.

The technical and characteristic details contained in this data sheet shall be updated periodically. For consultation in real time, please visit the website: www.azichem.com. The date of revision is indicated in the space to the side. The current edition cancels out and replaces any previous version.

Please note that the user is required to read the latest Safety Data Sheet for this product, containing chemical-physical and toxicological data, risk phrases and other information regarding the safe transport, use and disposal of the product and its packaging. For consultation, please visit: www.azichem.com.

It is forbidden to dispose of the product and/or packaging in the environment.

