

## Flangia con vite

### Insulation fastener steel nail and plastic dowel



Insulation fastener plastic dowel (58 mm in diameter and 40 mm in length) with screw in corrosion-resistant galvanised steel (30 mm) for connecting ARMAGLASS STRUCTURA mesh in anti-detachment RINFOR SYSTEM 1 and 2.

**CUSTOMS CODE:** 3925 9010

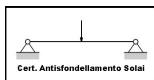
**COMPONENTS:** Single-component

**APPEARANCE:** Connector

**AVAILABLE COLORS:** Red

**PACKAGING AND DIMENSIONS:** Bulk material 1 unit

### OBTAINED CERTIFICATIONS AND REGULATIONS



### FEATURES AND BENEFITS

The dowel is characterised by its gripping surface with improved adherence, to be particularly light, manageable, durable and tensile-resistant due to the closing cap in the input hole of the SCREW FOR CONCRETE that facilitates the operation of shaving with mortars in the RINFOR SYSTEMS 1 and 2. The galvanised steel CONCRETE SCREW is particularly resistant to corrosion.

### FIELDS OF APPLICATION

Preventing slab detachment with a Flangia con vite is a robust and economical fastening component in the ARMAGLASS STRUCTURA network of the RINFOR SYSTEMS 1 and 2.

### ALLOWED SUPPORTS

Concrete

### MODE OF USE


Make a hole on the concrete joists of the slab respecting the minimum/maximum dimensions indicated in the Technical Specifications then insert the dowel into the hole and fasten with a CONCRETE SCREW.




## APPLICATION METHODS


To be added to other components - Apply by hand

## KEY FEATURES

 Flange housing hole diameter: 8 mm

 Use wearing protective gloves

 Unlimited shelf-life

 UV-resistant

## TECHNICAL SPECIFICATIONS

Minimum depth of the screw hole **40 mm**

*della vite*  
Shear strength **12 kN**

*della vite*  
Bending moment **20 Nm**

Minimum support thickness **60 mm**

Maximum fixable thickness **70 mm**

*della vite*  
Twist **30 Nm**

Minimum depth of installation of the screw **30 mm**

*della vite*  
Breaking load longitudinal **22 kN**

Flange diameter **58 mm**

Screw head diameter **11.5 mm**

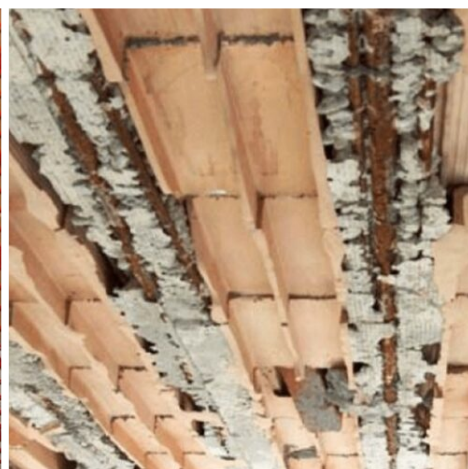
## CONSUMPTION

No less than 4 pieces per square metre when a Flangia con vite is used in the RINFOR SYSTEMS 1 and 2 to prevent slab detachment.

## STORAGE AND CONSERVATION

Inadequate storage of the product may result in a loss of rheological performance. Avoid contact between the product and acid substances.

## PHOTO GALLERY



## ADDITIONAL CONTENT



## WARNINGS AND PRECAUTIONS

The general information, along with any instructions and recommendations for use of this product, including in this data sheet and eventually provided verbally or in writing, correspond to the present state of our scientific and practical knowledge. Any technical and performance data reported is the result of laboratory tests conducted in a controlled environment and thus may be subject to modification in relation to the actual conditions of implementation.

Azichem Srl does not assume any liability arising from inadequate characteristics related to improper use of the product or connected to defects arising from factors or elements unrelated to the quality of the product, including improper storage. Those wishing to utilise the product are required to determine prior to use whether or not the same is suitable for the intended use, assuming all consequent responsibility.

The technical and characteristic details contained in this data sheet shall be updated periodically. For consultation in real time, please visit the website: [www.azichem.com](http://www.azichem.com). The date of revision is indicated in the space to the side. The current edition cancels out and replaces any previous version.

Please note that the user is required to read the latest Safety Data Sheet for this product, containing chemical-physical and toxicological data, risk phrases and other information regarding the safe transport, use and disposal of the product and its packaging. For consultation, please visit: [www.azichem.com](http://www.azichem.com).

It is forbidden to dispose of the product and/or packaging in the environment.

