

## Prerit Solution

### Superficial set retarder for washed concrete paving



Set retarder in aqueous solution to be applied, using a low pressure airless pump, on fresh concrete surfaces, to allow removal by washing with water, a cortical layer a few millimetres thick, and then expose the aggregate forming the concrete. Specific for the realisation of floors with landscape/environmental value with the "washed gravel" technique.

**CUSTOMS CODE:** 3824 4000

**COMPONENTS:** Single-component

**APPEARANCE:** Liquid

**AVAILABLE COLORS:** Light blu

**PACKAGING AND DIMENSIONS:** Plastic can 10 kg - Plastic can 25 kg - Plastic can 5 kg

### FEATURES AND BENEFITS

Surface gripping deactivator, in aqueous solution, to be diluted; based on polysaccharides, specific catalysers and antifoaming agents, allows for inhibiting the cement hydration reaction and slowing down the speed in gripping, only for a surface layer a few millimetres thick, without altering in any way the performance characteristics of the concrete flooring.

### FIELDS OF APPLICATION

Construction of concrete floors with a high aesthetic value with the technique of the "washed gravel" (extrados with "exposed" aggregates).

### ALLOWED SUPPORTS

Concrete - Floor screed

### MODE OF USE

Apply on site and float, with the usual methods, a packaged concrete on the basis of design and regulatory requirements. PRERIT must be used in pure form (without dilution). With the concrete still in "fresh" condition, apply by spraying the set retarder, in the amount determined in the preliminary tests, depending on the "washing" depth desired. Usually, for an inhibition depth up to 2-3 mm, the dose of the product is equal to about 100-150 g/m<sup>2</sup>. Indicatively, after a time between 2 and 24 hours, remove the delayed superficial cement paste, with pressure wash from 120 to 200 bar, displaying the surface gravel. The washing times and pressures depend on the climatic conditions in which the work is being carried out, the mix design of the concrete and other variables. Do preliminary tests to better calibrate these important parameters.






## APPLICATION METHODS




Low pressure airless nebulizer

## TOOL CLEANING

Water

## KEY FEATURES

-  Density: 1.03 kg/dm<sup>3</sup>
-  Shelf-life: 6 months
-  Temperature of use: +5 / +35 °C

-  Nonflammable
-  Solvent-free
-  UV-resistant

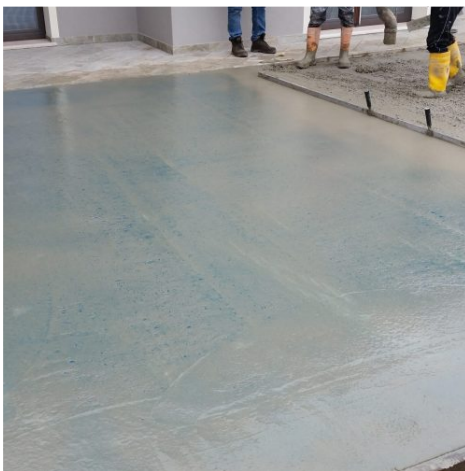
## CONSUMPTION

From 0.10 to 0.15 kg of Prerit Solution for every square metre of surface to be deactivated.

## STORAGE AND CONSERVATION

Protect from freezing. Store the product in its original packing, in a fresh and dry environment, avoiding frost and direct sunlight. Inadequate storage of the product may result in a loss of rheological performance.

## PHOTO GALLERY



Produced and distributed by **AZICHEM srl**  
Via Giovanni Gentile, 16/A - 46044 Goito (MN), Italy  
Tel: +39 0376.604185 / 604365  
Fax: +39 0376 604398  
[www.azichem.com](http://www.azichem.com) - [info@azichem.com](mailto:info@azichem.com)

Update of **30-03-2021**  
Terms of sale and legal notices available at  
<https://www.azichem.com/general-sales-conditions>  
**Total pages of this document: 4**

## ADDITIONAL CONTENT



### Considerations on "washed gravel" floors

"Washed gravel" floors refer to floors in which the surface/cortical layer was removed, for a thickness of a few millimetres, with pressure washing, in order to highlight ("expose") the stones that make up the conglomerate itself. The aggregates that constitute the concrete will be directly visible and in projection; thus it goes without saying that the latter then constitute a very important part of the aesthetic effect of the final product. Thus the use of round and colored aggregates, surrounded by white cement binders, for example, once treated with the method of the "washed gravel", will give great and aesthetic value to the finished works (in comparison to a concrete with aggregates from crushing, usually grey in color, mixed with grey cement). The technical and structural characteristics of the original flooring (quality and dosage of the cement, type and nature of the conglomerate, resistance to compression, thicknesses, any armour, etc.) will remain unchanged.

For an excellent pavement with the "washed gravel" technique, of exceptional aesthetic and functional value, we recommend that you follow the following guidelines and tips:

1. Packing the concrete with white cement 42.5 R, dosed at not less than 350 kg/m<sup>3</sup>.
2. Use round aggregates (not from crushing) and at least 4 different colours, chosen by the customer based on their aesthetic tastes, and particle size of 1 mm to 12 mm.
3. Add to the concrete by reason of 1 kg/m<sup>3</sup>, multifilament polypropylene fibre Readymesh PM-180.
4. Create a thickness of at least 10 cm.
5. Treat the cortical part of the flooring, subsequently to washing, with the lithium silicate solution QL Nano Lithium.



## WARNINGS AND PRECAUTIONS

The aesthetic effect is considerably influenced by the depth of removal of the cortical layer of concrete. To obtain results to your satisfaction, it is advisable to carry out preliminary tests with the materials and the working conditions that will characterise the processing. Indeed, the delay times and the thickness of the washing depend on several factors, such as the type of cement, the amount of cement, the distance between the concrete mixing plant and the unloading site, the water/cement ratio, the temperature of the fresh concrete, the ambient temperature, the ventilation etc..

Carry out the washing stage within 24 h of the day of laying the flooring; waiting too long could compromise the effectiveness of the inhibition and therefore not allow the success of the "washed gravel" effect. The general information, along with any instructions and recommendations for use of this product, including in this data sheet and eventually provided verbally or in writing, correspond to the present state of our scientific and practical knowledge.

Any technical and performance data reported is the result of laboratory tests conducted in a controlled environment and thus may be subject to modification in relation to the actual conditions of implementation.

Azichem Srl does not assume any liability arising from inadequate characteristics related to improper use of the product or connected to defects arising from factors or elements unrelated to the quality of the product, including improper storage.

Those wishing to utilise the product are required to determine prior to use whether or not the same is suitable for the intended use, assuming all consequent responsibility.

The technical and characteristic details contained in this data sheet shall be updated periodically. For consultation in real time, please visit the website: [www.azichem.com](http://www.azichem.com). The date of revision is indicated in the space to the side. The current edition cancels out and replaces any previous version.

Please note that the user is required to read the latest Safety Data Sheet for this product, containing chemical-physical and toxicological data, risk phrases and other information regarding the safe transport, use and disposal of the product and its packaging. For consultation, please visit: [www.azichem.com](http://www.azichem.com).

It is forbidden to dispose of the product and/or packaging in the environment.

