

Readymesh PM

Multi-filament fibre for lime based plaster, cement or mixed



Readymesh PM is an auxiliary, multi-filament polypropylene micro-fibre suitable for addition to cement conglomerates with a lime or mixed base. The addition of Readymesh PM to the mix counters the cracking phenomenon due to plastic shrinkage of the plaster, mortar, screed or concrete, as well as having positive effects on the durability of the mix, resistance to frost/defrosting and resistance to knocks and overall impermeability. Readymesh PM have the CE marking and are available in three different lengths: Readymesh PM-060 = 6 mm; Readymesh PM-120 = 12 mm; Readymesh PM-180 = 18 mm.

CUSTOMS CODE: 5503 4000

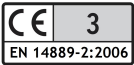
COMPONENTS: Single-component

APPEARANCE: Fibers

AVAILABLE COLORS: White

PACKAGING AND DIMENSIONS: Hydro degradable bag 1 kg - PM-060 Box: 12 x (Hydro degradable bag 1 kg) - PM-120 Box: 12 x (Hydro degradable bag 1 kg) - PM-180 Box: 12 x (Hydro degradable bag 1 kg) - Pallet: 54 x (PM-060 Box 12 Kg)

OBTAINED CERTIFICATIONS AND REGULATIONS



FIELDS OF APPLICATION

Readymesh PM is an auxiliary fibre used in a multitude of application fields, where three-dimensional reinforcement and diffusion of the cement conglomerate and/or lime base is required. It is a particularly indicated fibre for addition to small manufactured works or for plaster, even in small thickness and with reduced granulometry inerts.

ALLOWED SUPPORTS

Plasters - Concrete - Cement-based or lime-based mortars - Floor screed

MODE OF USE



Add the fibres to the conglomerate during mixing. Mix, with the drum of the cement mixer at full speed, for at least 5-6 minutes. The dosage, based on use, is normally between 600 g/m³ and 1.5 kg/m³. On average, 250 g of fibres per 200 litre building site cement mixer. The addition of fibres could slightly modify the rheology of the cement mix.

APPLICATION METHODS

To be added to other components



KEY FEATURES

 Density: 0.91 g/cm³
 Unlimited shelf-life

 Nonflammable

TECHNICAL SPECIFICATIONS

Auto-ignition temperature > **400 °C**

ASTM D 1929
Flash-point **350 °C**

Non-toxic material

Resistant to chemical agents

Softening point **160 - 170 °C**

Alkali-resistant material

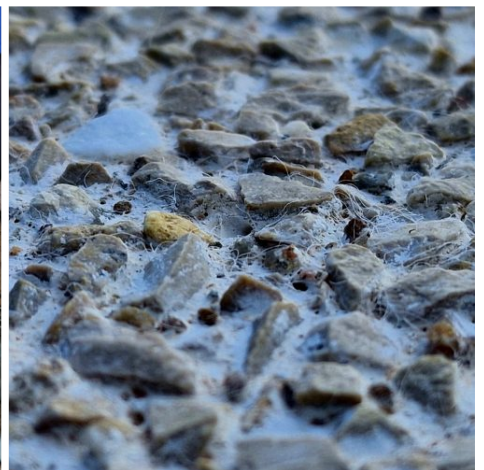
CONSUMPTION

Variable according to the type of work to be carried out (screeds, plasters, mortars), on average from 0.6 to 1.5 kg per cubic metre of cement or hydraulic lime based conglomerate.

STORAGE AND CONSERVATION

Store the product in its original packing, in a fresh and dry environment, avoiding frost and direct sunlight. Protect from humidity.

PHOTO GALLERY



Produced and distributed by **AZICHEM srl**
Via Giovanni Gentile, 16/A - 46044 Goito (MN), Italy
Tel: +39 0376.604185 / 604365
Fax: +39 0376 604398
www.azichem.com - info@azichem.com

Update of **29-05-2024**
Terms of sale and legal notices available at
<https://www.azichem.com/general-sales-conditions>
Total pages of this document: 3

ADDITIONAL CONTENT



Features of the different Readymesh PM models:

Fiber model	Readymesh PM-060	Readymesh PM-120	Readymesh PM-180
Fiber length	6 mm	12 mm	18 mm
Fiber diameter	0.035 mm	0.027 mm	0.035 mm
Elongation at break	28%	-	28%
Effect on the consistency of the concrete (Vebè)	1.0 s	2.5 s	1.3 s
Unit weight	8.75 dTex	5.05 dTex	8.75 dTex
Toughness	22.71 cN / tex	47.99 cN / tex	22.71 cN / tex

WARNINGS AND PRECAUTIONS

The general information, along with any instructions and recommendations for use of this product, including in this data sheet and eventually provided verbally or in writing, correspond to the present state of our scientific and practical knowledge. Any technical and performance data reported is the result of laboratory tests conducted in a controlled environment and thus may be subject to modification in relation to the actual conditions of implementation.

Azichem Srl does not assume any liability arising from inadequate characteristics related to improper use of the product or connected to defects arising from factors or elements unrelated to the quality of the product, including improper storage. Those wishing to utilise the product are required to determine prior to use whether or not the same is suitable for the intended use, assuming all consequent responsibility.

The technical and characteristic details contained in this data sheet shall be updated periodically. For consultation in real time, please visit the website: www.azichem.com. The date of revision is indicated in the space to the side. The current edition cancels out and replaces any previous version.

Please note that the user is required to read the latest Safety Data Sheet for this product, containing chemical-physical and toxicological data, risk phrases and other information regarding the safe transport, use and disposal of the product and its packaging. For consultation, please visit: www.azichem.com.

It is forbidden to dispose of the product and/or packaging in the environment.

