

Repar Tix

Thixotropic, rheoplastic, structural, reinforced fibre cement mortar



Structural, thixotropic, rheoplastic, composite cement mortar, based on high-resistance cements, superpozzolanic fillers, polymeric modifiers, anti-shrink agents, plasticisers, stabilisers, anti-corrosive, anti-allergic additives, selected aggregates, polypropylene fibres.

CUSTOMS CODE: 3824 5090

COMPONENTS: Single-component

APPEARANCE: Powder

AVAILABLE COLORS: Gray

PACKAGING AND DIMENSIONS: Bag 25 kg - Pallet: 50 x (Bag 25 kg)

OBTAINED CERTIFICATIONS AND REGULATIONS



FIELDS OF APPLICATION

Restorations and repairs, structural recovery, reinforcement reconstruction, construction of reliable and durable coatings for building, civil, hydraulic, industrial, concrete and masonry works.

ALLOWED SUPPORTS

Concrete - Prefabricated concrete - Bricks - Mixed walls (bricks and stones) - Stone walls - Rock walls

PREPARATION OF SUPPORTS

Application surfaces should be clean, free of dirt, crumbling and non-adhering parts, dust etc., and saturated with water "saturated with dry surface".. An adequate roughening of the surfaces by scarifying, sandblasting etc. is always necessary in order to obtain the maximum adhesion values to the substrate. The optimal values are obtained with high pressure hydro-scarification. Bare the irons undergoing disruptive oxidation or deeply oxidized, removing the rust of the exposed irons (by sandblasting or abrasive brushes). It is advisable to previously to apply the realkalising reinforcement Consilex San on the exposed surfaces, before they are restored.

MODE OF USE

Pour 2/3 of the total mixing water (about 3 litres per bag) in the concrete mixer, gradually add the product and the remaining water, until a homogeneous lump-free mixture of the desired consistency is obtained. Cure the protection and the prolonged moist hardening of exposed surfaces. The addition of Bond HG to the mixing water (at a rate of approximately 0.5-0.7 kg for each lot of product) allows substantial improvements in terms of adherence, adhesion, watertightness, workability, moldability and capacity of deformation.

APPLICATION METHODS

Brick trowel - Finishing trowel - Shotcrete machine - Plastering machine - Spatula

TOOL CLEANING

Water


KEY FEATURES

↔ Max. recommended thickness: 3-4 cm

→← Min. recommended thickness: 5 mm


 Nonflammable

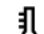
 Shelf-life: 12 months

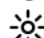
 Use wearing protective gloves

 Maximum diameter of aggregate: 1.5 mm

 Mix with water: 15 %

 Pot-life: 60 min

 Temperature of use: +5 / +35 °C

 UV-resistant

TECHNICAL SPECIFICATIONS

UNI EN 12190

Compressive strength after 1 day \geq **19 N/mm²**

UNI EN 196/1

Flexural strength at 1 day $>$ **3.5 N/mm²**

UNI EN 13295

Resistance to carbonatation **1.5 mm**

UNI EN 13687-1

Determination of thermal compatibility * $>$ **2 MPa**

UNI EN 1015-17

Chloride content $<$ **0.01 %**

EN 13142

Static elastic modulus $>$ **21000 N/mm²**

Water/binder ratio **0.38**

UNI EN 1015-6

Density **2170 kg/m³**

UNI EN 12190

Compressive strength after 28 days \geq **55 N/mm²**

UNI EN 196/1

Flexural strength after 28 days \geq **8 N/mm²**

UNI EN 13036-4

Skid resistance **51 mm**

UNI EN 1542

Bonding force * $>$ **2 N/mm²**

Darcy impermeability **1 x 10 E-10 cm/s**

UNI PdR 88:2020

Total recycled content \geq **3.7 %**

EN 13501-1

Reaction to fire **A1**

pH $>$ **12.5**

UNI EN 13057

Capillary absorption **0.30 kg·h^{0.5}/m²**

CONSUMPTION

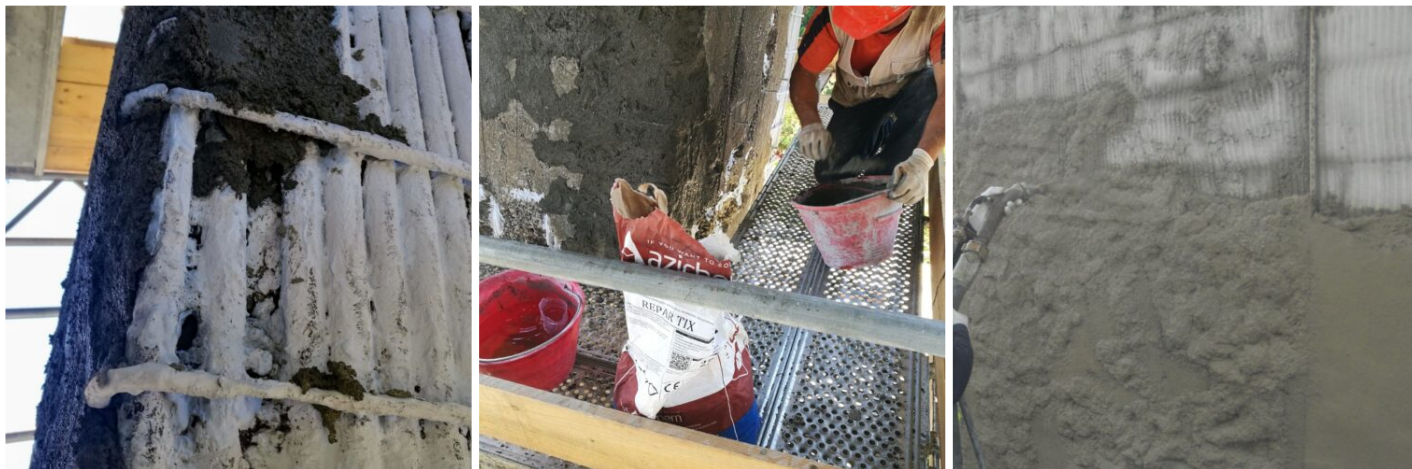
Approximately 19 kg/m² of Repar Tix for every centimetre of thickness to be implemented (approximately 1900 kg per cubic metre).



STORAGE AND CONSERVATION

Store the product in its original packing, in a fresh and dry environment, avoiding frost and direct sunlight.

PHOTO GALLERY



ADDITIONAL CONTENT



WARNINGS AND PRECAUTIONS

High coating thicknesses, static, monolithic requirements, etc., it may be necessary to resort to appropriate reinforcements (electrowelded mesh etc.) anchored to the support with Syntech Profix or GROUT MICROJ or Repar Tix G2. The general information, along with any instructions and recommendations for use of this product, including in this data sheet and eventually provided verbally or in writing, correspond to the present state of our scientific and practical knowledge. Any technical and performance data reported is the result of laboratory tests conducted in a controlled environment and thus may be subject to modification in relation to the actual conditions of implementation.

Azichem Srl does not assume any liability arising from inadequate characteristics related to improper use of the product or connected to defects arising from factors or elements unrelated to the quality of the product, including improper storage. Those wishing to utilise the product are required to determine prior to use whether or not the same is suitable for the intended use, assuming all consequent responsibility.

The technical and characteristic details contained in this data sheet shall be updated periodically. For consultation in real time, please visit the website: www.azichem.com. The date of revision is indicated in the space to the side. The current edition cancels out and replaces any previous version.

Please note that the user is required to read the latest Safety Data Sheet for this product, containing chemical-physical and toxicological data, risk phrases and other information regarding the safe transport, use and disposal of the product and its packaging. For consultation, please visit: www.azichem.com.

It is forbidden to dispose of the product and/or packaging in the environment.

