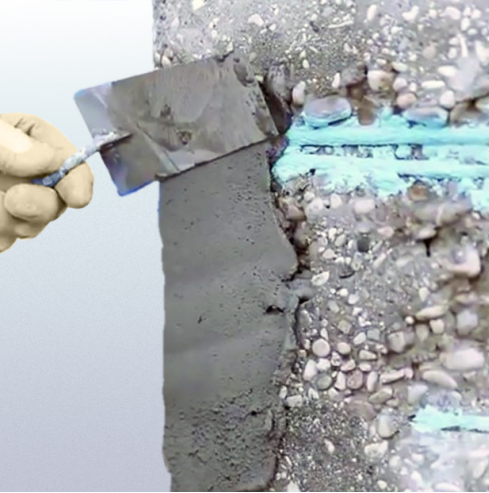


Repar Tix Fine

Thixotropic, rheoplastic, structural, fiber-reinforced cement mortar



A structural and shrinkage-compensated thixotropic cementitious mortar with a maximum aggregate grain size of 0.6 mm, consisting of high-strength cements, super-pozzolanic fillers, stabilising additives and high-tenacity polypropylene microfibres. The fine grain size and exceptional workability of the mortar render Repar Tix Fine particularly suited to cortical restorations of structures (with the maximum thickness of the single coat being 20 mm) on reinforced concrete and masonry works, for the restoration of concrete requiring an excellent level of surface finishing, operations on the intrados of slabs, even in environments with aggressive exposure (marine, industrial). Manual or spray application with wet curing for the first 48-72 hours.

CUSTOMS CODE: 3824 5090

COMPONENTS: Single-component

APPEARANCE: Powder

AVAILABLE COLORS: Gray

PACKAGING AND DIMENSIONS: Bag 25 kg - Pallet: 50 x (Bag 25 kg)

OBTAINED CERTIFICATIONS AND REGULATIONS



FEATURES AND BENEFITS

The fine grain size of the premix (maximum grain 0.5 mm) allows a very accurate level of finish and surface smoothing. The structural thixotropic mortar Repar Tix Fine can be advantageously added with 0.25% of Fluid SRA, a special additive capable of reducing both plastic shrinkage and hydraulic shrinkage. Fluid SRA in fact protects the curing of the mortar and, when mixed with Repar Tix Fine, it can be considered a technologically advanced system capable of reducing the rapid evaporation of water from the mortar and promoting the development of hydration reactions. Fluid SRA, thanks to the interaction with some components of the cement, allows to obtain final shrinkage from 20 to 50% lower than the standard values of the Repar Tix prepared with the addition of water alone.

FIELDS OF APPLICATION

Structural smoothing. Restoration, repairs, reconstruction of the concrete cover, construction of reliable and durable coatings of building, civil, hydraulic, industrial, concrete and masonry works.

ALLOWED SUPPORTS

Concrete - Prefabricated concrete - Bricks - Mixed walls (bricks and stones) - Stone walls - Rock walls



PREPARATION OF SUPPORTS

The application surfaces must be clean, free of dirt, crumbly and incoherent parts, dust, etc., saturated with "saturated dry surface" water. Adequate roughening of the surfaces by scarifying, sandblasting etc. is always necessary in order to obtain the maximum adhesion values to the substrate. The optimal values are obtained with high pressure hydro-scarification. Bare the irons undergoing disruptive oxidation or deeply oxidized, removing the rust of the exposed irons (by sandblasting or abrasive brushes). Before restoring them, it is recommended to apply the consolidating re-alkalizing Consilex San on exposed surfaces.

MODE OF USE

Pour 2/3 of the total mixing water into the mixer (about 2.5 liters per bag), gradually add the product and the remaining water, until a homogeneous mixture of the desired consistency and free of lumps is obtained. Take care of the protection and the damp curing of the exposed surfaces. The addition of Bond HG to the mixing water (in the ratio of about 0.5-0.7 kg per bag of product) allows significant improvements in terms of adhesiveness, adhesion, impermeability, workability, moldability and deformation capacity. High coating thicknesses, static requirements, monolithic requirements, etc. they may make it necessary to use suitable reinforcements (electro-welded meshes, etc.) anchored to the substrate with Syntech Profix, Syntech Fix EP or Grout Cable.

APPLICATION METHODS

Brick trowel - Finishing trowel - Shotcrete machine - Plastering machine - Spatula

TOOL CLEANING

Water


KEY FEATURES

↔ Max. recommended thickness: 20 mm


↔ Min. recommended thickness: 2 mm


 Nonflammable


 Shelf-life: 12 months

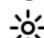
 Use wearing protective gloves

 Maximum diameter of aggregate: 0.6 mm

 Mix with water: 18-19 %

 Pot-life: 60 min

 Temperature of use: +5 / +35 °C

 UV-resistant

TECHNICAL SPECIFICATIONS

UNI EN 12190
Compressive strength > **50 N/mm²**

UNI EN 13295
Resistance to carbonatation **2.5 mm**

UNI EN 1015-12
Bonding force > **2 N/mm²**

UNI EN 13057
Capillary absorption **0.50 kg•h^{0.5}/m²**

Darcy impermeability **1 x 10 E-10 cm/s**

pH > **12.5**

EN 13142
Static elastic modulus > **20000 N/mm²**

UNI EN 196/1
Flexural strength > **6 N/mm²**

Water/binder ratio **0.39**

UNI PdR 88:2020
By-product recycled material content **≥ 0.8 %**

UNI EN 13687-1
Determination of thermal compatibility **2 MPa**

UNI EN 1015-17
Chloride content **<0.01 %**

EN 13501-1
Reaction to fire **A1**

UNI EN 1015-6
Density **2090 kg/m³**



CONSUMPTION

Approximately 18 kg / m² of Repair Tix Fine for each centimeter of thickness to be created (approximately 1800 kg for each cubic meter).

STORAGE AND CONSERVATION

Store the product in its original packing, in a fresh and dry environment, avoiding frost and direct sunlight. Inadequate storage of the product may result in a loss of rheological performance. Protect from humidity.

PHOTO GALLERY



ADDITIONAL CONTENT



Produced and distributed by **AZICHEM srl**
Via Giovanni Gentile, 16/A - 46044 Goito (MN), Italy
Tel: +39 0376.604185 / 604365
Fax: +39 0376 604398
www.azichem.com - info@azichem.com

Update of **24-09-2024**
Terms of sale and legal notices available at
<https://www.azichem.com/general-sales-conditions>
Total pages of this document: 4

WARNINGS AND PRECAUTIONS

The general information, along with any instructions and recommendations for use of this product, including in this data sheet and eventually provided verbally or in writing, correspond to the present state of our scientific and practical knowledge. Any technical and performance data reported is the result of laboratory tests conducted in a controlled environment and thus may be subject to modification in relation to the actual conditions of implementation.

Azichem Srl does not assume any liability arising from inadequate characteristics related to improper use of the product or connected to defects arising from factors or elements unrelated to the quality of the product, including improper storage. Those wishing to utilise the product are required to determine prior to use whether or not the same is suitable for the intended use, assuming all consequent responsibility.

The technical and characteristic details contained in this data sheet shall be updated periodically. For consultation in real time, please visit the website: www.azichem.com. The date of revision is indicated in the space to the side. The current edition cancels out and replaces any previous version.

Please note that the user is required to read the latest Safety Data Sheet for this product, containing chemical-physical and toxicological data, risk phrases and other information regarding the safe transport, use and disposal of the product and its packaging. For consultation, please visit: www.azichem.com.

It is forbidden to dispose of the product and/or packaging in the environment.

