

# Repar Tix Speedy HP

Fast hardening, thixotropic cement mortar



Structural, rheoplastic, thixotropic cement mix with controlled shrinkage, with adequate super-pozzolanic filler additives, hold accelerators and glass micro-fibres. The mix is equipped with very fast hold, excellent workability and excellent adhesion on cement supports to re-build. The product was mainly designed for small/medium repairs and reconstructions in environments where the fastness of application is important, such as works on roads, ports and airports.

**CUSTOMS CODE:** 3824 5090

**COMPONENTS:** Single-component

**APPEARANCE:** Powder

**AVAILABLE COLORS:** Gray

**PACKAGING AND DIMENSIONS:** Bag 25 kg

## OBTAINED CERTIFICATIONS AND REGULATIONS



## FIELDS OF APPLICATION

Suitable for surface regulation and reconstruction works on missing sections and cavities, especially in works involving structural renovation of worn concrete. Volumetric reconstruction of concrete cover on structures in reinforced concrete or prefabricated ashlar.

## ALLOWED SUPPORTS

Prefabricated concrete - Bricks - Calcestruzzo armato

## PREPARATION OF SUPPORTS

Application surfaces should be clean, free of soiling, crumbling and non-adhering parts, dust, etc., conveniently saturated with water until they reach the condition "saturated with dry surface". An adequate roughening of the surfaces by scarifying, sandblasting etc. is always necessary in order to obtain the maximum adhesion values to the substrate. The optimal values are obtained with high pressure hydro-scarification. Bare the irons undergoing disruptive oxidation or deeply oxidized, removing the rust of the exposed irons (by sandblasting or abrasive brushes).

## MODE OF USE

Pour about 2/3 of the mixing water into the mixer, add Repar Tix Speedy HP and the remaining water; continue to mix until a homogeneous lump-free mixture is obtained. The mixing water should be about 16 - 18% of the weight of the bag. Having finished mixing, immediately use the product for the works necessary, paying attention to its fast hardening. You are advised to use a little product at a time, only the quantity usable within 10 minutes after mixing (attention, the ambient temperature can also considerably affect the hold time of the product!).

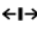
## APPLICATION METHODS

Brick trowel - Spatula

## TOOL CLEANING

Water

## KEY FEATURES

-  Density: 2.105 kg/dm<sup>3</sup>
-  Maximum diameter of aggregate: 0.7 mm
-  Pot-life: 20 - 30 min
-  Max. recommended thickness: 5 cm
-  Mix with water: 16 - 18 %
-  Shelf-life: 12 months

## TECHNICAL SPECIFICATIONS

EN 12190  
Compressive strength after 8 hours > **7 N/mm<sup>2</sup>**

EN 12190  
Compressive strength after 3 days > **35 N/mm<sup>2</sup>**

EN 12190  
Compressive strength after 28 days > **45 N/mm<sup>2</sup>**

EN 12190  
Flexural strength after 28 days > **9 N/mm<sup>2</sup>**

UNI EN 1015-6  
Density **2075 kg/m<sup>3</sup>**

UNI EN 1542  
Adhesion to substrate **2 N/mm<sup>2</sup>**

UNI PdR 88:2020  
Total recycled content  $\geq$  **3.8 %**

UNI 8147  
Contrasted expansion with air curing for 1 day > **0.01 %**

EN 12190  
Compressive strength after 1 day > **15 N/mm<sup>2</sup>**

EN 12190  
Compressive strength after 7 days **40 N/mm<sup>2</sup>**

EN 12190  
Flexural strength at 1 day > **3.5 N/mm<sup>2</sup>**

EN 196-3  
Setting time **40-60 min**

UNI EN 13057  
Capillary absorption < **0.50 kg·h<sup>0.5</sup>/m<sup>2</sup>**

Chloride content < **0.01 %**

UNI EN 13687-1  
Determination of thermal compatibility  $\geq$  **2 N/mm<sup>2</sup>**

EN 13142  
Static elastic modulus **21000 N/mm<sup>2</sup>**

## CONSUMPTION

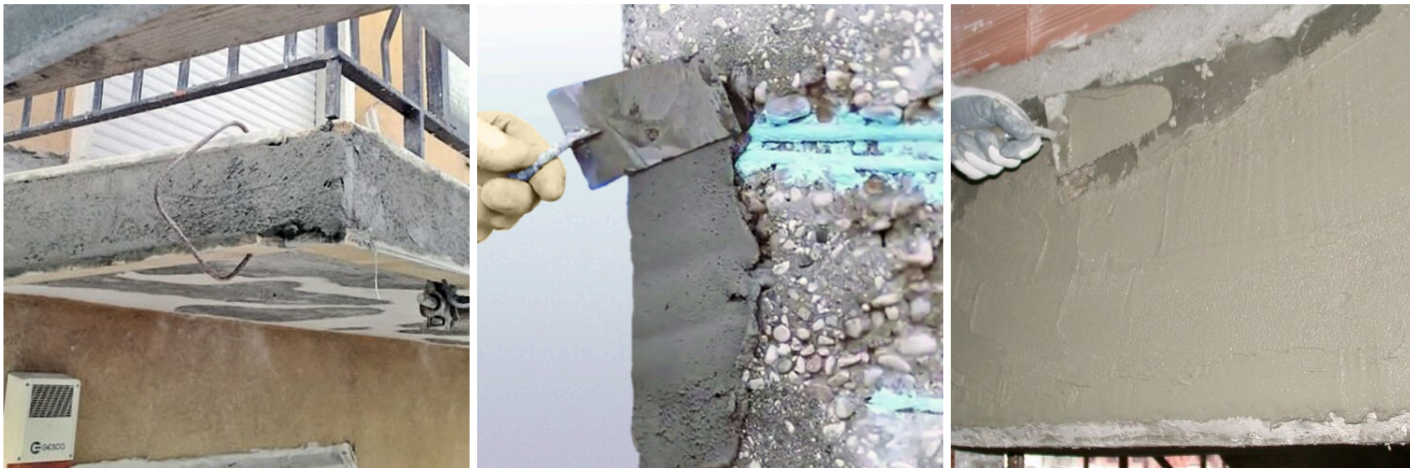
Approximately 19 kg/m<sup>2</sup> of Repar Tix Speedy HP for every centimetre of thickness to be implemented (approximately 1900 kg per cubic metre).

## STORAGE AND CONSERVATION

Store the product in its original packing, in a fresh and dry environment, avoiding frost and direct sunlight.



## PHOTO GALLERY



## ADDITIONAL CONTENT



## WARNINGS AND PRECAUTIONS

Do not apply in case of direct exposure to sunlight and/or excessive ventilation. Cure the protection and the prolonged moist hardening of exposed surfaces. Given the short setting time, it is recommended to prepare small amounts of product at a time, to avoid waste and scraps. The general information, along with any instructions and recommendations for use of this product, including in this data sheet and eventually provided verbally or in writing, correspond to the present state of our scientific and practical knowledge.

Any technical and performance data reported is the result of laboratory tests conducted in a controlled environment and thus may be subject to modification in relation to the actual conditions of implementation.

Azichem Srl does not assume any liability arising from inadequate characteristics related to improper use of the product or connected to defects arising from factors or elements unrelated to the quality of the product, including improper storage.

Those wishing to utilise the product are required to determine prior to use whether or not the same is suitable for the intended use, assuming all consequent responsibility.

The technical and characteristic details contained in this data sheet shall be updated periodically. For consultation in real time, please visit the website: [www.azichem.com](http://www.azichem.com). The date of revision is indicated in the space to the side. The current edition cancels out and replaces any previous version.

Please note that the user is required to read the latest Safety Data Sheet for this product, containing chemical-physical and toxicological data, risk phrases and other information regarding the safe transport, use and disposal of the product and its packaging. For consultation, please visit: [www.azichem.com](http://www.azichem.com).

It is forbidden to dispose of the product and/or packaging in the environment.

