

# Sanfluens

Superfluid grout based on reinforcing, injectable hydraulic lime mortar



Powder preparation, ready-to-use, based on hydraulic lime, for the preparation, with the sole addition of water, of grout for masonry reinforcement, injectable and castable, high performance in terms of sliding, strength and stability, for ecological building interventions and the restoration of vintage buildings and monuments.

**CUSTOMS CODE:** 3824 5090

**COMPONENTS:** Single-component

**APPEARANCE:** Powder

**AVAILABLE COLORS:** Gray

**PACKAGING AND DIMENSIONS:** Bag 25 kg - Pallet: 50 x (Bag 25 kg)

## OBTAINED CERTIFICATIONS AND REGULATIONS



## FEATURES AND BENEFITS

In the Sanfluens mixtures, the water is completely and stably incorporated from the hydration reaction of lime; conversely, in traditional mixtures, a very high part of added water, is free, and evaporating, it leaves gaps in the walls. Sanfluens is based on natural hydraulic lime, sodium gluconate, kaolin, aluminates; it does not contain cement, resins, solvents and radioemissive aggregates.

## FIELDS OF APPLICATION

Consolidation through injections of brick, stone or mixed masonry, "bag" structures, masonry damaged by the earthquake. Consolidation of masonry affected by capillary rising damp and soluble salts. Consolidation of plasters detached from the masonry support, even with frescoes or of historical and artistic value. Consolidation of foundation structures, pillars, vaults and arches.

## ALLOWED SUPPORTS

Cement-based or lime-based mortars - Bricks - Mixed walls (bricks and stones) - Stone walls - Lime and lime-cement plasters and mortars



## PREPARATION OF SUPPORTS

Clean the application surfaces by spraying abundantly with water. If there is a lack of plaster, apply a suitable render of hydraulic lime and sand (such as Untersana) to close as much as possible the escape routes of the grout once it has been injected. Trace, from bottom to top and from left to right, a 50 cm square grid. On the intersection of the squares, drill the masonry with a rotary drill, with a bit of suitable diameter (depending on the type of masonry to be injected; diameter usually between 12 and 24 mm), to a depth of at least 3/5 of its thickness, tilting the drill downwards by about 10 - 20°. Once all the holes have been drilled, they will be sucked up, blown with compressed air and sprayed with water, to remove the dust inside them produced by the drilling. Insert in the holes for a depth of about 5 cm, transparent meshed rubber tubes, with a total length of at least 30 cm (therefore with about 25 cm external). Properly seal the perimeter of the pipe with Anchorsana Fix accelerated setting grouting mortar to prevent the injected product from escaping. Inject the grout always keeping it lightly mixed and operating a continuous flow, without interruptions.

## MODE OF USE

Pour about 2/3 of the mixing water into the mixer. Gradually add Sanafluens and the water still required, continue to mix until a fluid, homogeneous, lump-free grout of the desired consistency is obtained. The mixing water indicatively necessary is equal to 22-24% by weight (5.5 - 6 litres per bag). Reinforcing backfills and fills can be carried out both by gravity and using manual or automatic pumps, depending on the type of application. To verify the effectiveness of the reinforcement, the grout will come out of the pipes adjacent to that in which it is injected.


## APPLICATION METHODS


Pour out - Injection - Pump


## TOOL CLEANING


Water

## KEY FEATURES

 Dosage: 1.50 - 1.55 kg/dm<sup>3</sup>

 Pot-life: 60 min

 Temperature of use: +6 / +30 °C

 Mix with water: 22-24 %

 Shelf-life: 12 months

## TECHNICAL SPECIFICATIONS

*UNI EN 1015-11*  
Compressive strength > **20 N/mm<sup>2</sup>**

*UNI EN 1015-12*  
Bonding force **1.2 N/mm<sup>2</sup>**

Static elastic modulus **12000 MPa**

*UNI EN 1015-18*  
Capillary absorption **0.53 kg•h<sup>0.5</sup>/m<sup>2</sup>**

*UNI EN 1015-17*  
Chloride content **0.0082 %**

*UNI EN 1015-11*  
Flexural strength > **6 N/mm<sup>2</sup>**

*EN 1745*  
Thermal conductivity **0.67 W/mK**

*EN 1745*  
Permeability to water vapor **15/35 μ**

*UNI EN 1015-6*  
Density **1980 kg/m<sup>3</sup>**

*UNI EN 1015-18*  
Water penetration after capillary absorption **2.4 mm**

## CONSUMPTION

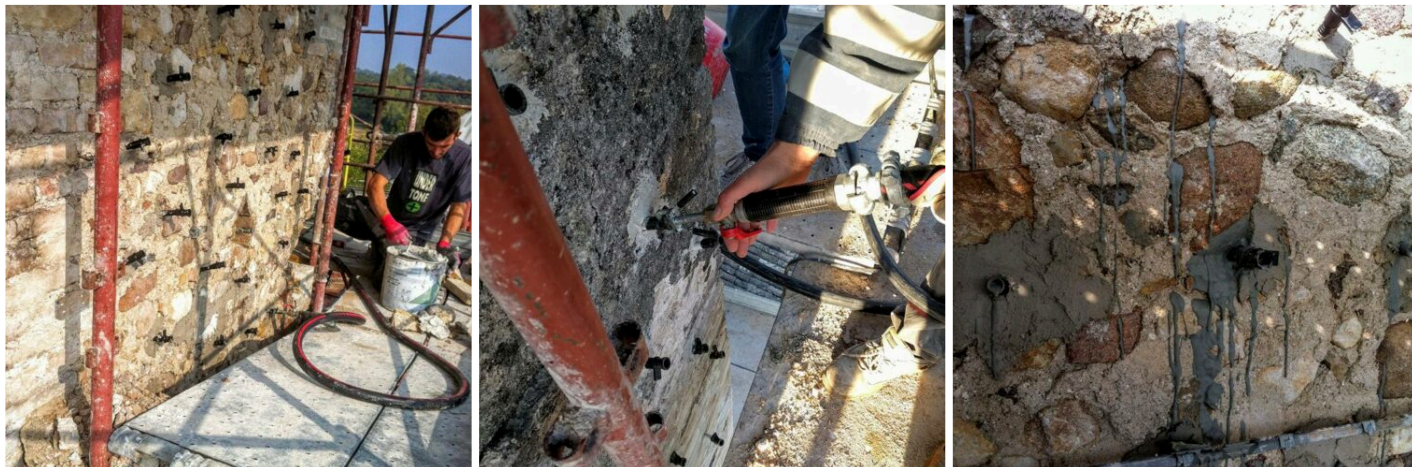
Approximately 1500 kg of Sanafluens for each cubic metre of volume to be filled.



## STORAGE AND CONSERVATION

Store the product in its original packing, in a fresh and dry environment, avoiding frost and direct sunlight. Inadequate storage of the product may result in a loss of rheological performance. Protect from humidity.

## PHOTO GALLERY



## WARNINGS AND PRECAUTIONS

An abundant preliminary injection of water into the holes drilled in the masonry is recommended, to allow an adequate and rapid sliding of the grout.

The general information, along with any instructions and recommendations for use of this product, including in this data sheet and eventually provided verbally or in writing, correspond to the present state of our scientific and practical knowledge.

Any technical and performance data reported is the result of laboratory tests conducted in a controlled environment and thus may be subject to modification in relation to the actual conditions of implementation.

Azichem Srl does not assume any liability arising from inadequate characteristics related to improper use of the product or connected to defects arising from factors or elements unrelated to the quality of the product, including improper storage.

Those wishing to utilise the product are required to determine prior to use whether or not the same is suitable for the intended use, assuming all consequent responsibility.

The technical and characteristic details contained in this data sheet shall be updated periodically. For consultation in real time, please visit the website: [www.azichem.com](http://www.azichem.com). The date of revision is indicated in the space to the side. The current edition cancels out and replaces any previous version.

Please note that the user is required to read the latest Safety Data Sheet for this product, containing chemical-physical and toxicological data, risk phrases and other information regarding the safe transport, use and disposal of the product and its packaging. For consultation, please visit: [www.azichem.com](http://www.azichem.com).

It is forbidden to dispose of the product and/or packaging in the environment.

