

Syntech AS 31

Thixotropic epoxy putty for structural fixes and repairs



The two-component structural epoxy adhesive putty is soft, thixotropic and spatulable (malleable paste), ideal for anchoring steel connectors, hermetically sealing through-holes in concrete, bonding steel plates on concrete surfaces, as an accessory product for laying road joints, for the reconstruction of wooden beam heads, repairing cracks and reconstructing missing geometries, fixing injectors, reconstructing joints in concrete flooring and fixing Elastotex 250 Combi elastic strips, including when in contact with water destined for human consumption.

CUSTOMS CODE: 3907 3000

COMPONENTS: Two-components

APPEARANCE: Paste + Paste

AVAILABLE COLORS: Gray

PACKAGING AND DIMENSIONS: Kit: 1 Can 5 kg [A] + 1 Can 2.5 kg [B] - Kit: 1 Canister 1 kg [A] + 1 Canister 0.5 kg [B]

OBTAINED CERTIFICATIONS AND REGULATIONS



FIELDS OF APPLICATION

Structural reinforcements of structural elements (beams, pillars, etc.) by bonding steel sheets to the concrete. Reconstruction of joints in concrete floorings. Rigid structural bonding (beton plaque) of prefabricated elements and of articles in different building materials: concrete, steel, glass, wood, marble, tiles, stones etc. Anchoring, bonding and attachment of connectors, ties etc. Attachment of elastic straps for waterproofing joints, Elastotex. Reconstruction of wooden heads, crack repair, reconstruction of missing geometries on various supports.

ALLOWED SUPPORTS

Concrete - Prefabricated concrete - Wood - Floor screed - Rock walls - Steel

PREPARATION OF SUPPORTS

The application surfaces must be suitably prepared and adequately resistant: free from dust, grease, soiling, crumbling and non-adhering parts, devoid of wet surface areas. For floorings, moreover, a shot peening or preliminary milling of the surfaces of adhesion is recommended. The metal elements are to be blasted to "almost white metal".



MODE OF USE

Make sure that the environment is well ventilated and wear the personal protective equipment mentioned in the safety data sheet. Add component B to component A, taking care to remove all the material from the packaging and mixing thoroughly with a mixer at a low number of revolutions (or a suitable manual tool), until a homogeneous mixture is obtained, indicated by the uniform colour and the absence of lumps. Apply to the surfaces with the help of spatulas, trowels, etc. Complete the tasks during the useful life of the product. Do not apply in rainy days; do not apply on moist or wet supports; do not apply on pulverised supports; use the product immediately after mixing.





APPLICATION METHODS




Brick trowel - Spatula

TOOL CLEANING

Thinner for resins

KEY FEATURES

-  Adhesion to the substrate: $>3.5 \text{ N/mm}^2$
-  Pot-life: 40-60 min
-  Suitable for contact with drinking water
-  Use wearing protective gloves

-  Density: 1.56 kg/dm^3
-  Shelf-life: 12 months
-  Temperature of use: $+8 / +35 \text{ }^\circ\text{C}$

TECHNICAL SPECIFICATIONS

Ratio of catalysis **1:1**

a 20°C
Complete hardening at 20°C **7 day**

EN 13412
Static elastic modulus **4.1 GPa**

ASTM D 695
Compressive strength **$65 \pm 5\% \text{ N/mm}^2$**

10' a 150°C
Dry residue **$96 \pm 1\%$**

Working temperature **$-20 / +60 \text{ }^\circ\text{C}$**

DIN 53452 a 20°C
Flexural strength **$31 \pm 5\% \text{ N/mm}^2$**

UN 8701-8 a 20°C
Gel time **$60 \pm 3.5\% \text{ min}$**

a 20°C
Touch hardening at 20°C **2 h**

ASTM D 638/2 a 20°C
Breaking load longitudinal **$35 \pm 5\% \text{ N/mm}^2$**

ASTM D 638/2 a 20°C
Longitudinal elongation at break **3 %**

CONSUMPTION

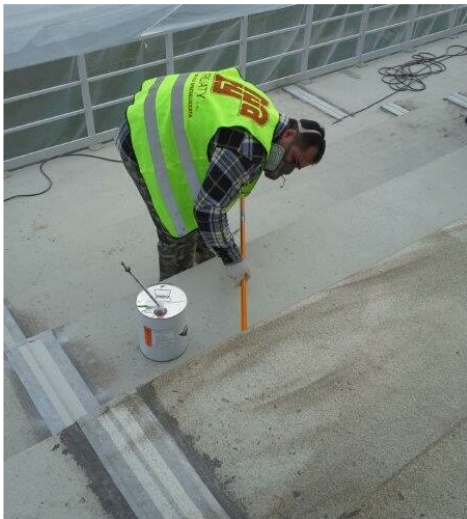
Approximately 1.6 kg of Syntech AS 31 for each cubic decimetre of volume to be grouted.

STORAGE AND CONSERVATION

Store the product in its original packing, in a fresh and dry environment, avoiding frost and direct sunlight. Inadequate storage of the product may result in a loss of rheological performance. Opened containers must be used immediately.



PHOTO GALLERY



ADDITIONAL CONTENT



WARNINGS AND PRECAUTIONS

The general information, along with any instructions and recommendations for use of this product, including in this data sheet and eventually provided verbally or in writing, correspond to the present state of our scientific and practical knowledge. Any technical and performance data reported is the result of laboratory tests conducted in a controlled environment and thus may be subject to modification in relation to the actual conditions of implementation.

Azichem Srl does not assume any liability arising from inadequate characteristics related to improper use of the product or connected to defects arising from factors or elements unrelated to the quality of the product, including improper storage. Those wishing to utilise the product are required to determine prior to use whether or not the same is suitable for the intended use, assuming all consequent responsibility.

The technical and characteristic details contained in this data sheet shall be updated periodically. For consultation in real time, please visit the website: www.azichem.com. The date of revision is indicated in the space to the side. The current edition cancels out and replaces any previous version.

Please note that the user is required to read the latest Safety Data Sheet for this product, containing chemical-physical and toxicological data, risk phrases and other information regarding the safe transport, use and disposal of the product and its packaging. For consultation, please visit: www.azichem.com. It is forbidden to dispose of the product and/or packaging in the environment.

