

Syntech Poliurea Primer – Pur

Single-component polyurethane primer specifically for bituminous sheaths



SYNTECH POLIUREA PRIMER-PUR is a single-component polyurethane primer with a base of low viscosity solvent, polyurethane resins and special isocyanates that, once applied, form an elastic film that adheres to the substrate. The processing times of this product range from 90 to 120 minutes, based on the percentage of ambient humidity.

CUSTOMS CODE: 3909 5090

COMPONENTS: Single-component

APPEARANCE: Liquid

AVAILABLE COLORS: Transparent / Neutral

PACKAGING AND DIMENSIONS: Can 20 kg

FIELDS OF APPLICATION

SYNTECH POLIUREA PRIMER-PUR offers a support for coatings and waterproofing in general. Intermediate adhesion promoter for two-time applications of polyureas, elastomeric products, etc.

ALLOWED SUPPORTS

Concrete - Fiber-cement - Tiles - Bitumen waterproofing membranes - Floor screed - Porphyry and natural stones

PREPARATION OF SUPPORTS

The surface of the substrate must be dry, properly cleaned, free from any debris and friable or detached parts. All substrates must have a degree of humidity not greater than 5%. The surface temperature during application must be at least +5° C above dew point. If necessary, depending on the surface, the following interventions are recommended: Bush-hammering Milling Sandblasting Shot Blasting Water-blasting Hydro-jet Cleaning Any contamination (water, dirt, dust, etc.) will have to be carefully removed before coating.

MODE OF USE

Mix the product with mechanical stirrer, being sure that the least possible amount of air is incorporated. Prevent the product from coming into contact with air or moisture. When the substrate is ready, apply SYNTECH POLIUREA PRIMER-PUR in the amount needed. Pay attention to the presence of condensate. In certain cases, whilst the product is still wet, complete a dusting of 0.5-0.8 quartz.

APPLICATION METHODS

Low pressure airless nebulizer - Brush - Paint roller



TOOL CLEANING

Thinner for resins

KEY FEATURES

- ✘ Density: 1.025 - 1.028 g/cm³
- ✘ Shelf-life: 6 months
- ✘ Temperature of use: +5 / +35 °C
- ✘ Use wearing protective gloves
- ✘ Pot-life: >9 h
- ✘ Solvent-based product
- ✘ Use wearing protective glasses

TECHNICAL SPECIFICATIONS

UNI EN ISO 3219:1996 Brookfield
Viscosity **300 - 600 mPas**

Touch hardening at 20°C **90 - 120 min**

Dry residue **70 %**

Maximum humidity of the support **5 %**

UNI EN 1542:1999
Concrete adhesion (cutting test) **>1.5 MPa**

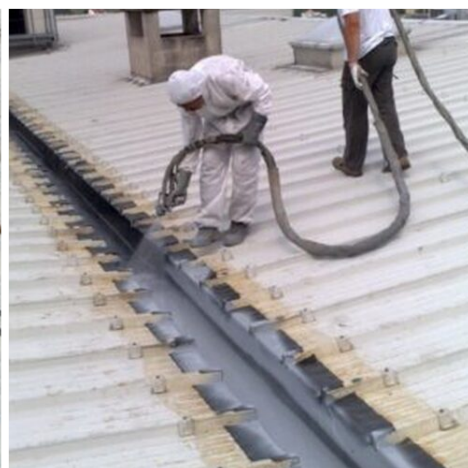
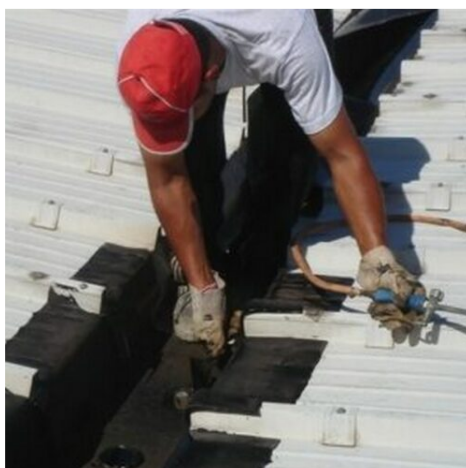
CONSUMPTION

From 80 to 120 grams of SYNTECH POLIUREA PRIMER-PUR per square metre of surface to be treated.

STORAGE AND CONSERVATION

Protect from freezing. Store the product in its original packing, in a fresh and dry environment, avoiding frost and direct sunlight. Inadequate storage of the product may result in a loss of rheological performance. Protect from humidity. Store the product at a temperature between +10°C and +30°C.

PHOTO GALLERY



ADDITIONAL CONTENT



WARNINGS AND PRECAUTIONS

The general information, along with any instructions and recommendations for use of this product, including in this data sheet and eventually provided verbally or in writing, correspond to the present state of our scientific and practical knowledge. Any technical and performance data reported is the result of laboratory tests conducted in a controlled environment and thus may be subject to modification in relation to the actual conditions of implementation.

Azichem Srl does not assume any liability arising from inadequate characteristics related to improper use of the product or connected to defects arising from factors or elements unrelated to the quality of the product, including improper storage. Those wishing to utilise the product are required to determine prior to use whether or not the same is suitable for the intended use, assuming all consequent responsibility.

The technical and characteristic details contained in this data sheet shall be updated periodically. For consultation in real time, please visit the website: www.azichem.com. The date of revision is indicated in the space to the side. The current edition cancels out and replaces any previous version.

Please note that the user is required to read the latest Safety Data Sheet for this product, containing chemical-physical and toxicological data, risk phrases and other information regarding the safe transport, use and disposal of the product and its packaging. For consultation, please visit: www.azichem.com.

It is forbidden to dispose of the product and/or packaging in the environment.

